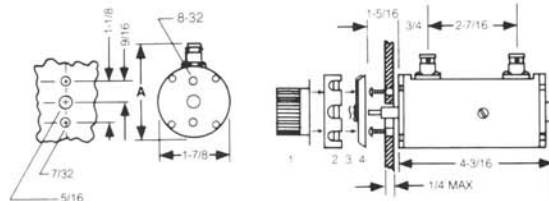


80 dB Step Attenuators

- Available in 50 and 75 Ohms
- Broad Frequency Range
- Positive Detent Action
- Use as Calibration Reference



Dual Concentric

The Models 5080 and 7580 are direct reading, dual concentric, turret-type attenuators that provide a total of 80 dB, variable in 1 dB steps. They are ideally suited for use in test sets requiring wide attenuation settings in the frequency range of 0 to 2000 MHz.

0.1 dB Resolution

The Models 5080.1 and 7580.1 Attenuator Sets consist of 10 dB, 1 dB and 0.1 dB per step turret type attenuators, mounted in a cabinet for bench top use. Each set has a total attenuation range of 0 to 81 dB with a fixed 1 dB insertion loss. Model 7580.1A includes dc blocks in both input and output.

Panel Mounting

The Models 5080 and 7580 have provision for panel mounting.

SPECIFICATIONS

MODELS	5080	7580	5080.1	7580.1*
Attenuation (dB)	0-80 in 1.0 steps	0-80 in 1.0 steps	0-81 in 0.1 steps	0-81 in 0.1 steps
Frequency Range (MHz)	0 to 2000	0 to 1000	0 to 1000	0 to 1000
Impedance (Ohms)	50	75	50	75
Insertion Loss (dB)	.7 max	0.7 max	1 dB +1.0 max	1 dB +1.0 max
Accuracy (dB)	± 0.5 to 500 MHz ± 1.0 to 1000 MHz ± 3.0 to 2000 MHz	± 0.5 to 500 MHz ± 1.0 to 1000 MHz	± 1.0 to 400 MHz ± 2.0 to 1000 MHz	± 1.0 to 500 MHz ± 2.0 to 1000 MHz
VSWR	1.2 to 1000 MHz 1.5 to 2000 MHz	1.1 to 500 MHz 1.2 to 1000 MHz	1.2 to 400 MHz 1.4 to 1000 MHz	1.2 to 500 MHz 1.3 to 1000 MHz
Max Input Power (Watts)	1/2	1/2	1/2	1/2
Angle Between Steps	30° from 0 to 10 dB 45° from 0 to 70 dB	30° from 0 to 10 dB 45° from 0 to 70 dB	—	—
Connectors	BNC Female (SMA, TNC and N available)	BNC Female (F available)	BNC Female (SMA, TNC and N available)	BNC Female (F available)
Dimensions	A = 6.2 cm (2 ⁷ / ₁₆ in.) BNC, TNC; 7.0 cm (2 ³ / ₄ in.) N; 6.4 cm (2 ¹ / ₂ in.) F, SMA	A = 6.2 cm (2 ⁷ / ₁₆ in.) BNC, TNC; 7.0 cm (2 ³ / ₄ in.) N; 6.4 cm (2 ¹ / ₂ in.) F, SMA	Height: 10.2 cm (4 in.) Width: 17.8 cm (7 in.) Depth: 10.2 cm (4 in.)	Height: 10.2 cm (4 in.) Width: 17.8 cm (7 in.) Depth: 10.2 cm (4 in.)
PRICE (FOB Beech Grove)	\$285	\$285	\$465	\$465

NOTE: All accuracy is with reference to the minimum loss position.
*7580.1A has dc blocks in both input and output.

