

# 11 dB Directional Coupler 30 - 1000 MHz

## DCG-10-4

V2.00

### Features

- Wide Frequency Range
- Constant Coupling - Within  $\pm 0.5$  dB

### C-7

### Guaranteed Specifications\* (From -55°C to +85°C)

<b>Frequency Range</b>	30-1000 MHz
<b>Coupling (Input to Output)</b>	11.0 $\pm$ 0.5 dB
<b>Coupling Flatness</b>	$\pm$ 0.5 dB Max
<b>VSWR (All Ports)</b>	1.35:1 Max
<b>Directivity (Both Directions)</b>	20 dB Min
<b>Main Line Loss (Including Theoretical 0.46 dB Power Split)</b>	1.5 dB Max

### Operating Characteristics

<b>Input Power</b>	5.0 Watts Max
<b>Environmental</b>	MIL-STD-202 screening available.

\* All specifications apply with 50 ohm source and load impedance. This product contains elements protected by United States Patent Number 3,426,298.

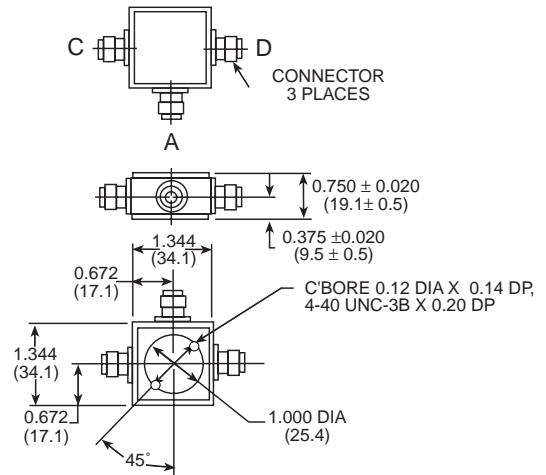
\*\* Includes theoretical power split.

### Functional Diagram



### Ordering Information

Part Number	Package
DCG-10-4 BNC	Connectorized
DCG-10-4 SMA	Connectorized
DCG-10-4 N	Connectorized
DCG-10-4 TNC	Connectorized



Dimensions in ( ) are in mm.  
Unless Otherwise Noted: .xxx =  $\pm 0.015$  (.x =  $\pm 0.4$ )  
WEIGHT (APPROX): 2.5 OUNCES 71 GRAMS

Typical Performance

